

# MONTHLY MEMBERSHIP PROGRESS REPORT

District 13 OH2

Results as of: 3/31/2026

GMT:

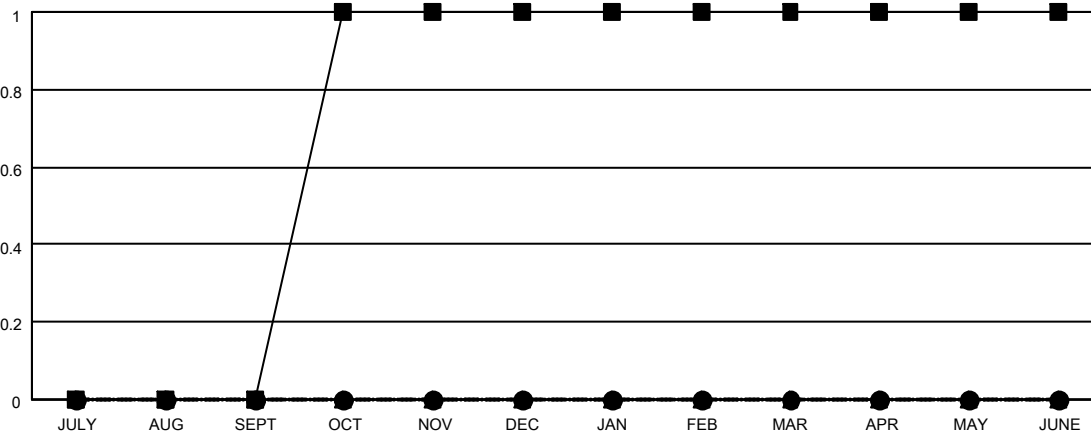
LOCATION OHIO

GMT CA

Clubs			
RESULTS FOR 2025-2026			
QUARTER	NEW CLUB GOAL	NEW CLUBS	DROPPED CLUBS
JULY/AUG/SEPT	0	0	0
OCT/NOV/DEC	1	0	1
JAN/FEB/MAR	0	0	0
APR/MAY/JUNE	0	0	0

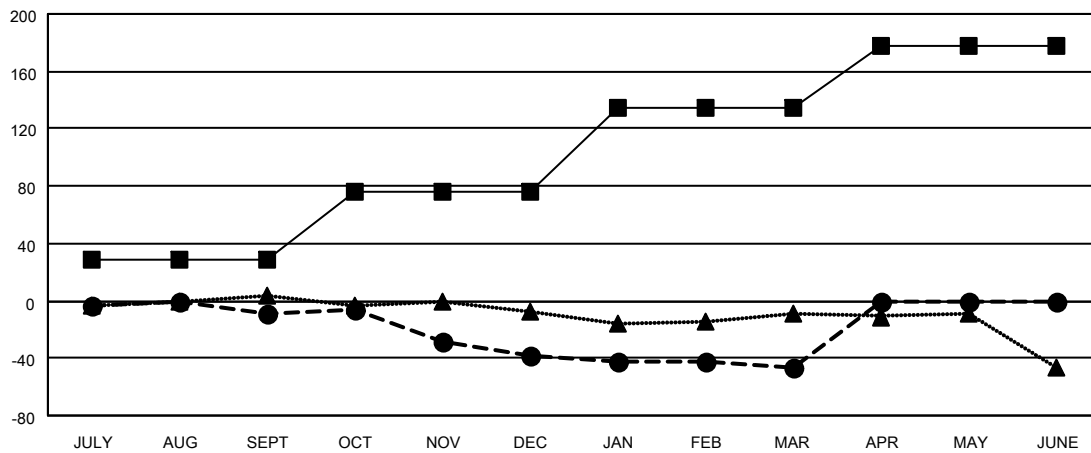
Members			
RESULTS FOR 2025-2026			
QUARTER	MEMBER GROWTH NET GOAL	MEMBER GROWTH ACTUAL	DROPPED MEMBERS ACTUAL (including transfers)
JULY/AUG/SEPT	29	33	38
OCT/NOV/DEC	47	19	47
JAN/FEB/MAR	58	19	26
APR/MAY/JUNE	44	0	0

GOALS AND ACTUAL NEW CLUBS CUMULATIVE



- - CURRENT YEAR GOALS FOR NEW CLUBS
- - CURRENT YEAR ACTUAL NEW CLUBS
- ▲ - LAST YEAR ACTUAL NEW CLUBS

GOALS AND ACTUAL MEMBERS CUMULATIVE



- - MEMBER GROWTH NET GOAL
- - MEMBER GROWTH ACTUAL
- ▲ - LAST YEAR MEMBERSHIP ACTUAL

DROPPED CLUBS: 1	24 CLUBS OF 53 ADDED 1 OR MORE NEW MEMBERS	<b>GENDER DISTRIBUTION</b>
		MALE 1,054 (67.43%)
		FEMALE 509 (32.57%)
<b>DROPPED MEMBERS</b>	<a href="#">CLICK HERE FOR CUMULATIVE MEMBERSHIP DATA</a>	TOTAL FAMILY UNIT MEMBERS 381
DECEASED 24		FAMILY MEMBERS PAYING HALF DUES 194
CLUB CANCELLED 0		
OTHER 87		
<b>TOTAL 111</b>		